

New FISH panel for Ph-like B-ALL

Effective August 5, 2019

Cytogenetics is offering a new fluorescence in situ hybridization (FISH) panel for Philadelphia chromosome (Ph) – like B-lymphoblastic leukemia/lymphoma (B-ALL)

Effective Monday, August 5, 2019, the Cytogenetics Laboratory began offering a new fluorescence in situ hybridization (FISH) panel for Philadelphia chromosome (Ph) – like B-lymphoblastic leukemia/lymphoma (B-ALL). When requested, this testing will be offered to patients diagnosed with B-ALL where initial first-line diagnostic FISH panel testing (see below) is normal.

Initial Standard ALL FISH Panel (adult)

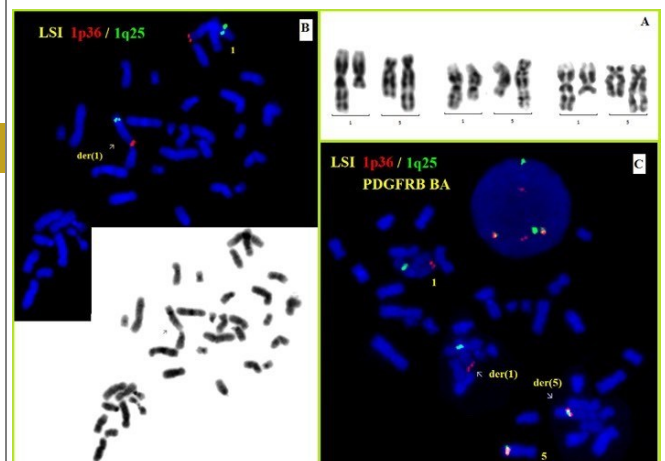
Trisomies of 4, 10 and 17
Hyperdiploidy/hypodiploidy
Chromosome 9p (CDKN2A) deletion
BCR-ABL (Philadelphia Chromosome)
KMT2A (MLL) rearrangement
t(12;21) ETV6-RUNX1 or RUNX1 amplification
CRLF2 rearrangement

Initial Standard ALL FISH Panel (pediatric)*

Trisomies of 4, 10, and 17
Hyperdiploidy/hypodiploidy
BCR-ABL (Philadelphia Chromosome)
KMT2A (MLL) rearrangement
t(12;21) ETV6-RUNX1 or RUNX1 amplification
*CRLF2 rearrangement added on as reflex if expected

New Ph-like ALL FISH Panel (adult and pediatric)

ABL1 rearrangement
ABL2 rearrangement
PDGFRB rearrangement
JAK2 rearrangement



For technical questions, please contact:

- Kathleen Bone, MSc, PhD, FACMG, FCCMG, Acting Director, Cytogenetics; 414.805.4861, kbone@mcw.edu

